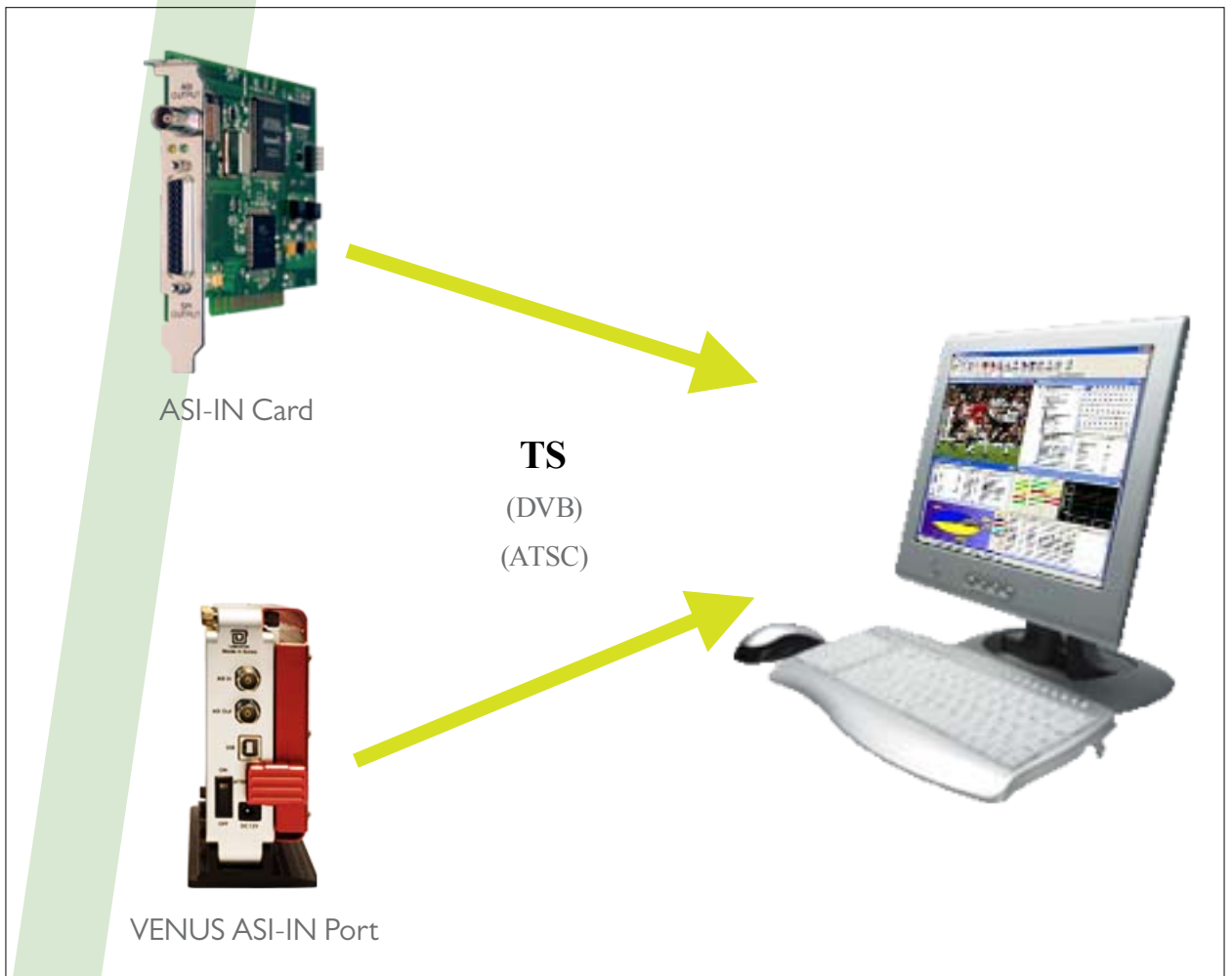


MPEG2 TS Analyzer

# T-Scope

*High Level of Performance and Cost Effective Testing and Analyzing Solution!*

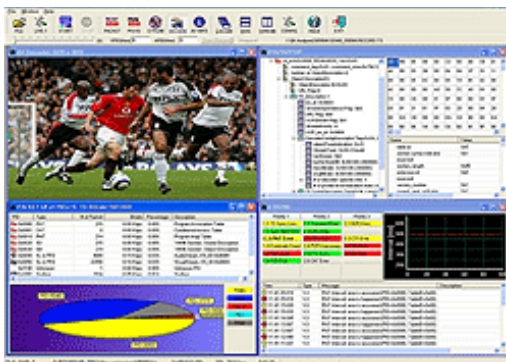


## Overview

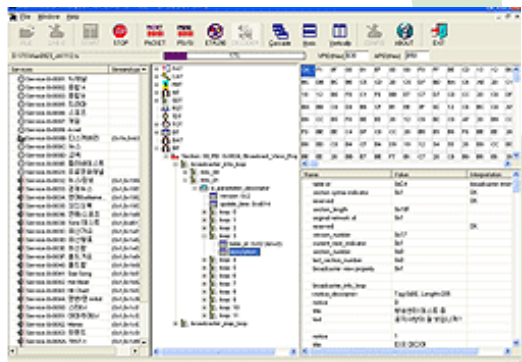
MPEG2 TS Analyzer is the professional stream analyzer allows not only the analysis of file input but also the analysis of real-time RF input. MPEG Analyzer is compliant with various Digital Broadcasting Standards such as DVB-T, DVB-C, DVB-S, ATSC, Opencable. It is the best solution for designing, manufacturing, verifying and operating digital TV equipment.

## Base Feature

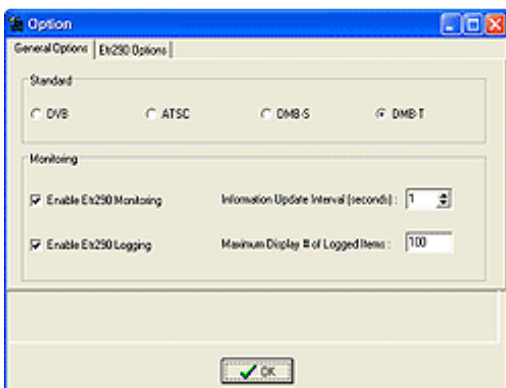
- DTV standards compliance - ATSC, DVB-C, DVB-S, DVB-T
- Multiple Physical layer interface
- DVB-ASI, DVB-SPI, SMPTE310
- 10/100/1000 Mbps Ethernet
- Real-Time & Off-Line Analysis
- ETSI TR 101 290 Priority 1st, 2nd, 3rd Error Monitoring
- Diagnostic & Verification of MPEG designs
- PCR, PTS interval, arrival time graphing, Measurement display, Jitter analysis
- Triggered Recording
- Data rate Analysis
- Table / Packet view
- SI/PSI & PSIP view & Interval analysis
- PCR and PTS Analysis
- CAS view : ECM, EMM repetition rate & update time
- Real-Time Error Monitoring measurements : TR 101 290 priority 1st, 2nd, and 3rd level
- PTS analysis view
- Error logging
- RF analysis : BER, MER, EVM, RF power, Constellation
- PES Header Analysis
- Real-Time A/V Decoding



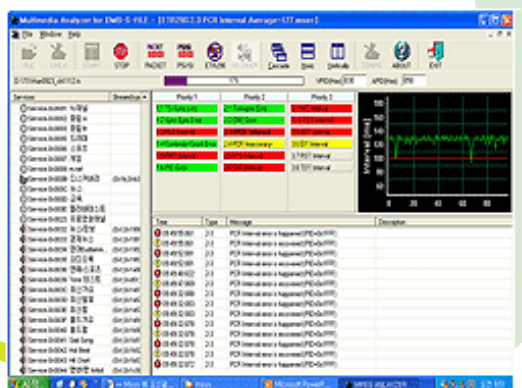
Overall Packet Analysis



PSI/SI Analysis



Standard Selection



PCR, Jitter Analysis